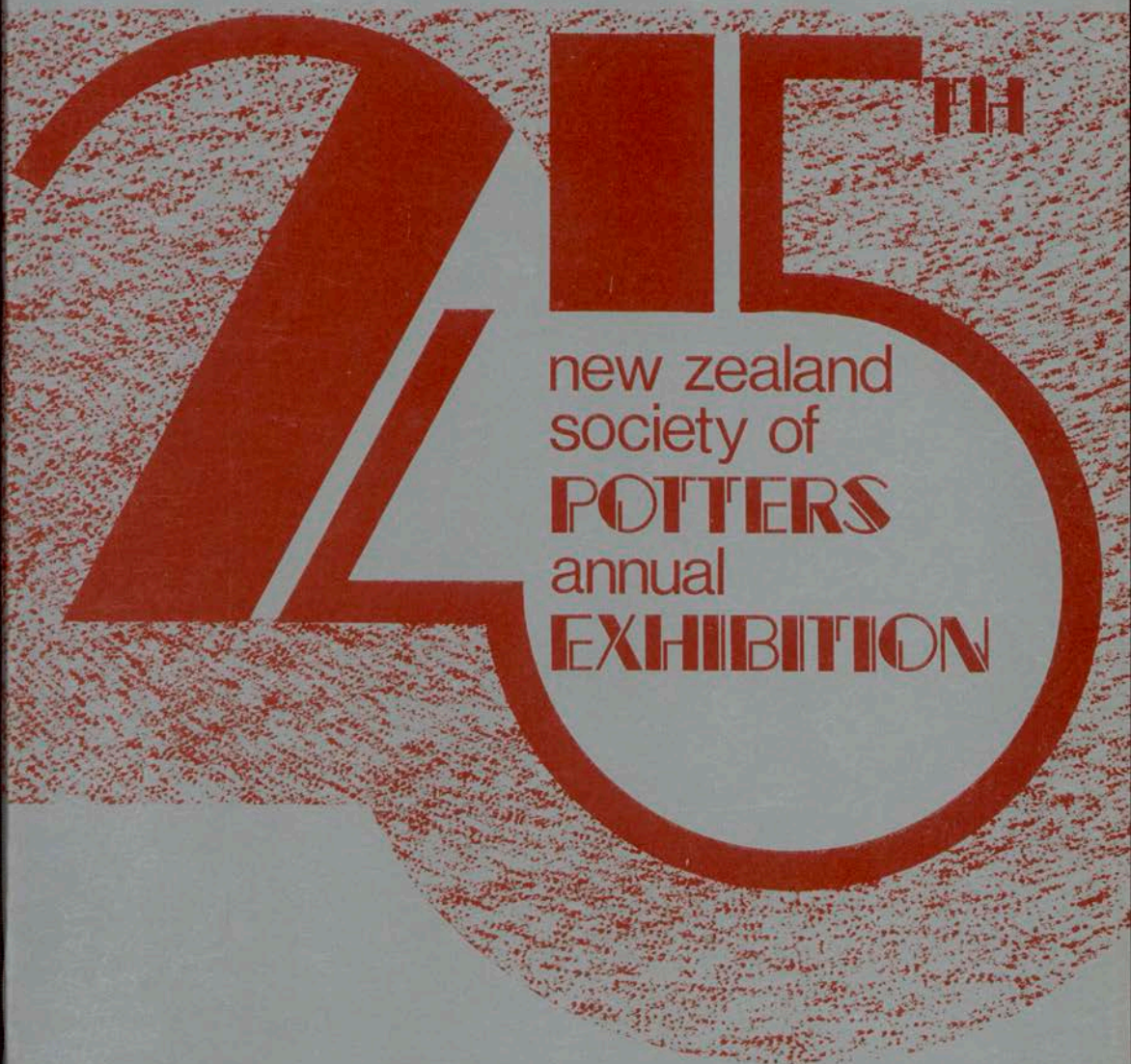


GOVETT-BREWSTER  
ART GALLERY  
new plymouth



22 OCTOBER - 20 NOVEMBER 1983



25<sup>TH</sup>

**SPONSORS**

**Fletcher Brownbuilt, Resene Paints Ltd,  
Pan Am, Scott Commercial Ltd,  
Taranaki Savings Bank and Winstone Ltd.**

The Contents of This Book are Copyright

**FOREWORD**

*This exhibition, the 25th Annual Exhibition of the New Zealand Society of Potters, has been arranged to coincide with the National Conference of that organisation held in New Plymouth over Labour week-end 1983.*

*A warm welcome is extended to all Gallery visitors to this exhibition, especially those potters from all parts of New Zealand here for their National Conference. Please take advantage of the facilities and hospitality offered by your host Gallery. Every enquiry is welcomed.*

**Dick Bett**

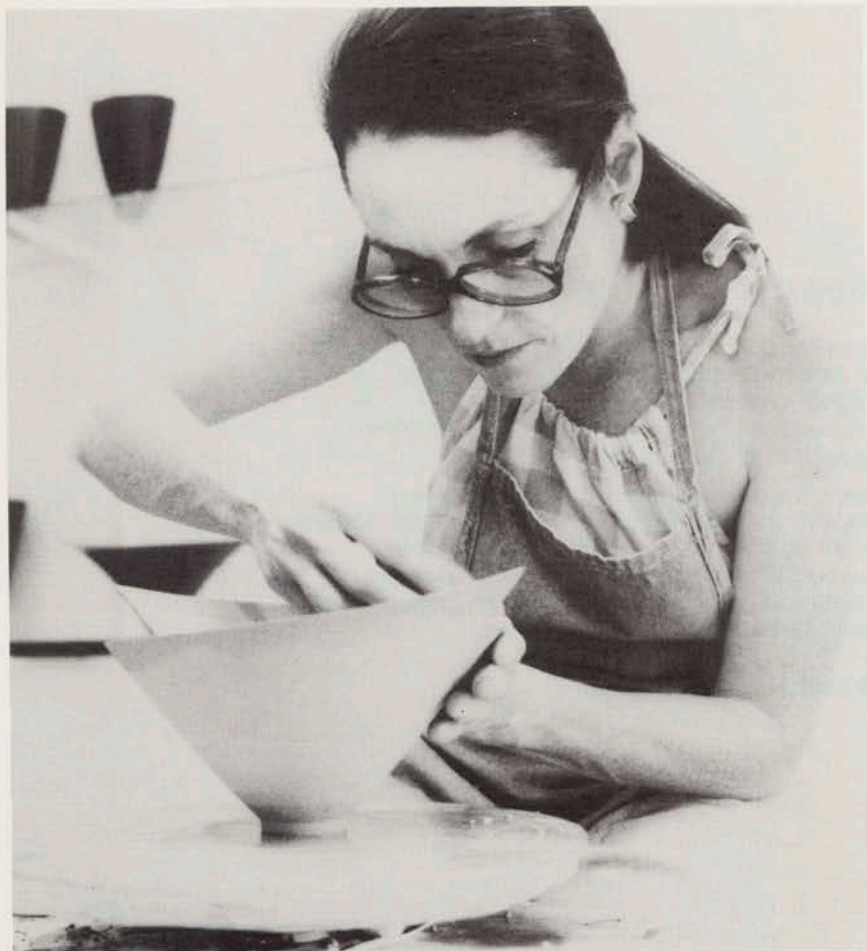


**SPONSORS**  
Plymouth Pottery, Plymouth Pottery Ltd

*For Conditions of Sales see last page*



## SPECIAL GUEST EXHIBITORS



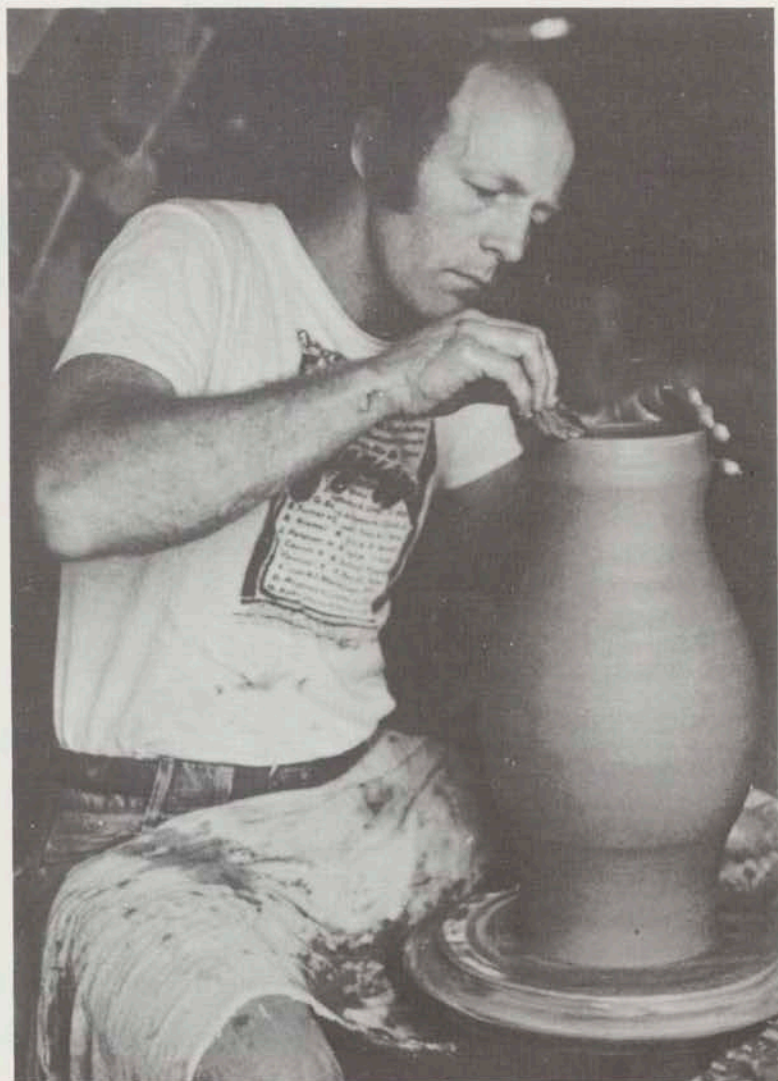
Elsa Rady, U.S.A.

Elsa Rady is a New York born potter who now lives and works in Venice, California. She specializes in very fine porcelain pieces. Currently her work focuses on conical forms with a strong interest in the rims, and the use of coloured glazes. She is represented in many collections of major art galleries in the United States. Elsa will be in New Zealand for about six weeks, running workshops. A real perfectionist, she has arranged to bring her own clay with her from the United States, to ensure desired results. While in the country she will fulfil a wish to visit the rainforests of Westland.

### Elsa Rady, U.S.A.

- |    |                        |           |         |
|----|------------------------|-----------|---------|
| 1. | Turquoise Bowl         | Porcelain | US\$800 |
| 2. | Pink Bowl              | Porcelain | 700     |
| 3. | Green Bowl             | Porcelain | 600     |
| 4. | Grey Blush Bowl        | Porcelain | 1,200   |
| 5. | Cobalt Blue Gloss Bowl | Porcelain | 800     |
| 6. | Matt Black Bowl A      | Porcelain | 1,200   |
| 7. | Copper Red Bowl        | Porcelain | NFS     |
| 8. | Matt Black Bowl B      | Porcelain | 900     |





**Jack Troy, U.S.A.**

Jack Troy, who hails from Pennsylvania, U.S.A., divides his time between his own claywork and tutoring in ceramics at college level. He has conducted numerous workshops all over the United States and been a guest tutor at a number of different universities. His publications on salt-glaze firing and anagama firing have become virtually standard texts. Jack has been keen to come to New Zealand for some time, to see local work and to further his current research for a book on salt-glaze kilns around the world. This three-month visit has been made possible through the sponsorship of Fletcher Brownbuilt. While here he is conducting various workshops in different parts of the country and intends to walk the Milford Track.

### **Jack Troy, U.S.A.**

9.	Faceted Vase	Anagama-fired Stoneware	US\$150
10.	Paddled Bottle	Anagama-fired Stoneware	125
11.	Cylindrical Vase	Anagama-fired Stoneware	150
12.	Bottle with Tipped Lip	Anagama-fired Stoneware	125
13.	Four-sided Paddled Bottle	Anagama-fired Stoneware	300
14.	Four-sided Bottle	Anagama-fired Porcelain	110
15.	Bottle with Elongated Neck	Porcelain	135
16.	Bottle with Stony Texture	Porcelain	135
17.	Bottle with Stones	Porcelain	110
18.	Bottle with Glaze Run	Porcelain	90
19.	Copper Red Teapot	Porcelain	75
20.	Copper Red Bottle	Porcelain	135
21.	Covered Jar	Porcelain	75
22.	Vase with Blue-Green Slip	Salt-glazed Porcelain	300
23.	Teabowl with Haresfur Slip	Salt-glazed Porcelain	175
24.	Slumped Form with White Slip	Salt-glazed Stoneware	150
25.	Pitcher with Iron-saturated Glaze	Salt-glazed Porcelain	110
26.	Vase	Salt-glazed Stoneware	125



## AUCKLAND REGION

Selectors: Brian Muir, Rick Rudd & Howard Williams

### Frank Bates, Warkworth

- |     |              |           |      |
|-----|--------------|-----------|------|
| 27. | Teapot       | Stoneware | \$60 |
| 28. | Faceted Vase | Stoneware | 55   |
| 29. | Faceted Jar  | Stoneware | 35   |

### Jan Bell, Auckland

- |     |       |           |     |
|-----|-------|-----------|-----|
| 30. | Jar A | Stoneware | 200 |
| 31. | Jar B | Stoneware | 200 |

### Roger Brittain, Auckland

- |     |                    |           |    |
|-----|--------------------|-----------|----|
| 32. | Dichromic Bottle A | Stoneware | 32 |
| 33. | Dichromic Bottle B | Stoneware | 33 |

### Rosemarie Brittain, Auckland

- |     |                               |           |    |
|-----|-------------------------------|-----------|----|
| 34. | Pink Elephant & Balloons      | Porcelain | 32 |
| 35. | Pink & White Elephant Bowl    | Porcelain | 30 |
| 36. | Tipsy Elephant Bowl           | Porcelain | 32 |
| 37. | Pair of Footed Elephant Bowls | Porcelain | 60 |

### Len Castle, Auckland

- |     |                |           |     |
|-----|----------------|-----------|-----|
| 38. | Hanging Form A | Stoneware | 250 |
| 39. | Hanging Form B | Stoneware | 250 |

### Chris Cockell, Auckland

- |     |                           |           |    |
|-----|---------------------------|-----------|----|
| 40. | Pair of Stoppered Bottles | Stoneware | 30 |
| 41. | Stoppered Bottle          | Stoneware | 25 |

### Jan Cockell, Auckland

- |     |                      |                      |    |
|-----|----------------------|----------------------|----|
| 42. | Teapot               | Ash-glazed Porcelain | 55 |
| 43. | Trinket Box          | Ash-glazed Porcelain | 25 |
| 44. | Group of 3 Cylinders | Ash-glazed Porcelain | 60 |

### Judy Dickson, Whangarei

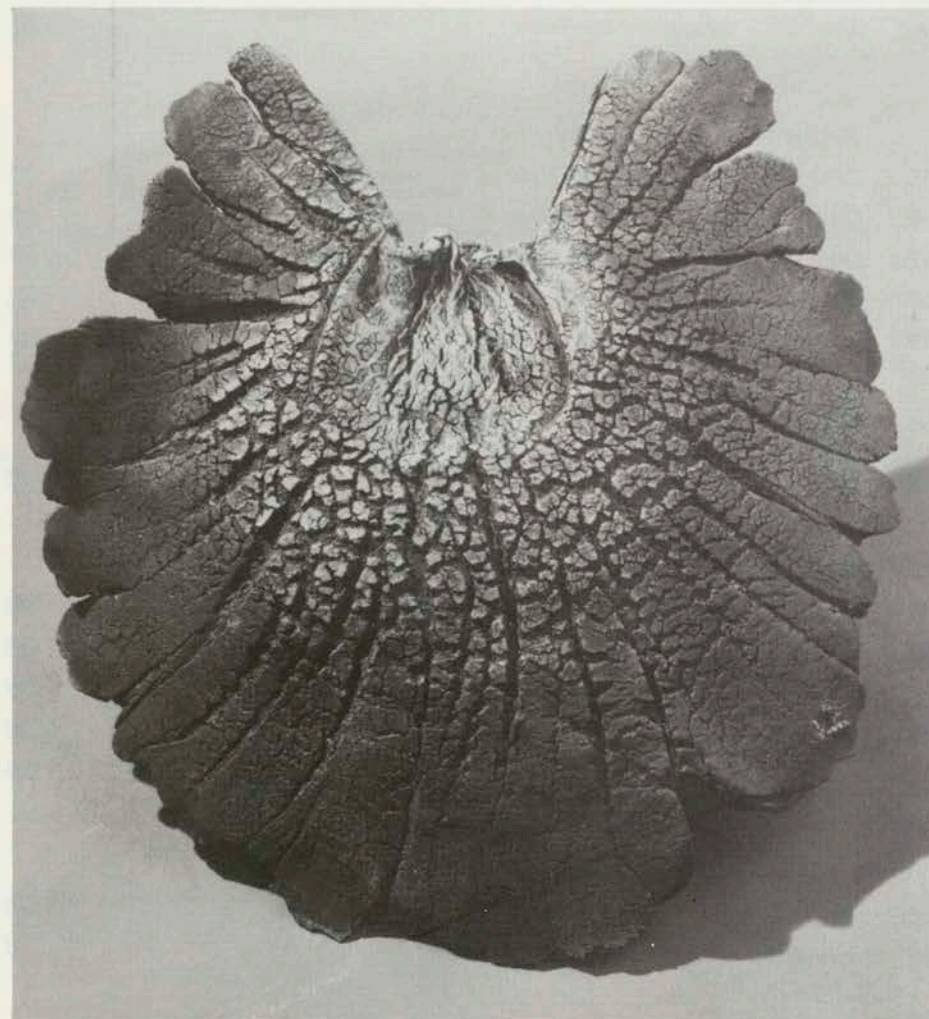
- |     |             |           |       |
|-----|-------------|-----------|-------|
| 45. | Bush Teapot | Stoneware | \$ 40 |
|-----|-------------|-----------|-------|

### Ted Dutch, Auckland

- |     |                        |                            |    |
|-----|------------------------|----------------------------|----|
| 46. | Signaller Wall Panel A | Porcelain with fired metal | 80 |
| 47. | Signaller Wall Panel B | Porcelain with fired metal | 80 |

### Ron Efferion, Auckland

- |     |      |           |    |
|-----|------|-----------|----|
| 48. | Bowl | Porcelain | 15 |
|-----|------|-----------|----|



Len Castle, Auckland: Hanging Form A, Stoneware



**Moyra Elliott, Auckland**

49. Bowl Form Smoked Earthenware \$110

**Ian Firth, Warkworth**

50. 10-pint Casserole Stoneware 75  
51. Barbeque Drinkset (7 pieces) Stoneware 130  
52. Dish Stoneware 55

**Margaret Gallagher, Auckland**

53. Bowl A Wood-fired Stoneware 45  
54. Bowl B Wood-fired Stoneware 20

**Brian Gartside, Drury**

55. On a Theme of Waikato River A Stoneware 90  
56. On a Theme of Waikato River B Stoneware 90  
57. On a Theme of Waikato River C Stoneware 50  
58. On a Theme of Waikato River D Stoneware 50  
59. On a Theme of Waikato River E Stoneware 50

**Jillian Hay, Auckland**

60. Plate Stoneware 45

**Barbara Hockenull, Wellsford**

61. Bowl A Porcelain 36  
62. Bowl B Porcelain 36  
63. Bowl C Porcelain 36  
64. Bowl D Porcelain 36  
65. Bowl E Porcelain 36

**Alan Kestle, Auckland**

66. Inlaid Orb A Porcelain 38  
67. Inlaid Orb B Porcelain 18

**Beverley Luxton, Auckland**

68. Lustred Bowl A Porcelain \$45  
69. Lustred Bowl B Porcelain 28  
70. Lustred Pill Box A Porcelain 32  
71. Lustred Pill Box B Porcelain 38

**Wallace Luxton, Auckland**

72. Platter Stoneware 25

**Margaret Mouat, Whangarei**

73. Platter Stoneware 48

**Chester Nealie, Auckland**

74. Round Jar Wood-fired Stoneware 95  
75. Bottle Wood-fired Stoneware 350  
76. Jar with Lug Wood-fired Stoneware 245  
77. Tea Pot Wood-fired Stoneware 75

**Stuart Newby, Auckland**

78. Jar A Salted Stoneware 15  
79. Jar B Salted Stoneware 12  
80. Pair of Jars Salted Stoneware 20

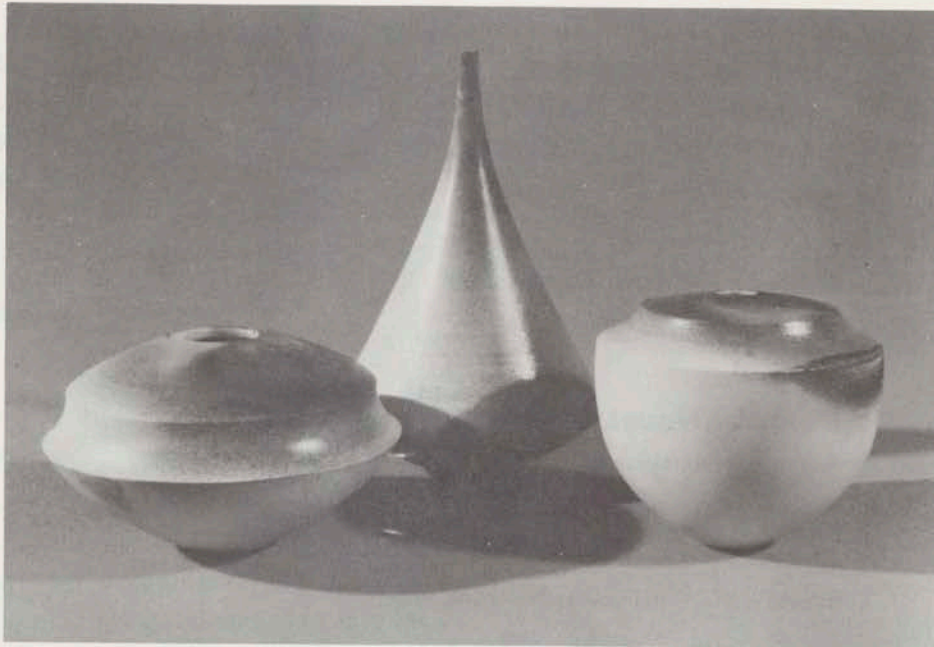
**John Parker, Auckland**

81. Pitted White Bowl A Stoneware 55  
82. Pitted White Bowl B Stoneware 65  
83. Pitted White Bowl C Stoneware 65  
84. Pitted White Bowl D Stoneware 75

**Cecilia Parkinson, Auckland**

85. Porcelain Form A Saggar-fired Porcelain 30  
86. Porcelain Form B Saggar-fired Porcelain 30  
87. Porcelain Form C Saggar-fired Porcelain 25





Cecilia Parkinson, Auckland: Porcelain Forms B, A and C, Saggar-fired Porcelain

**Robin Paul, Auckland**

- 88. Crackle Bottle Porcelain \$18
- 89. Flanged Vase Porcelain 22

**Rick Rudd, Auckland**

- 90. Raku No. 657 Raku 325
- 91. Raku No. 658 Raku 150
- 92. Raku No. 659 Raku 100
- 93. Raku No. 660 Raku 125

**Brett Smout, Auckland**

- 94. Green Bowl Stoneware 70

**Robyn Stewart, Whangarei**

- 95. Moko Tangata 1 Low-fired Burnished Earthenware 198
- 96. Moko Tangata 2 Low-fired Burnished Earthenware 228

**Margaret Sumich, Auckland**

- 97. Pair of Vases Stoneware \$30

**Carrol Swan, Auckland**

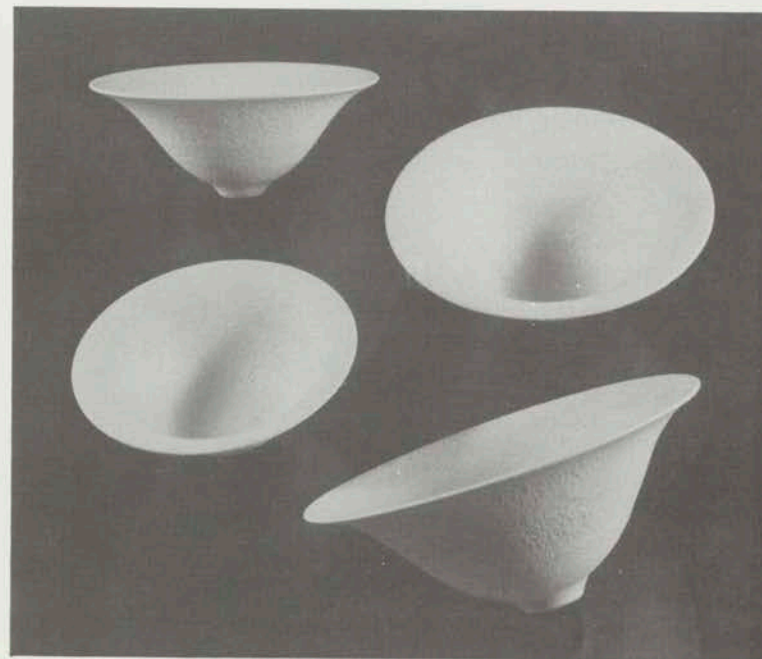
- 98. Gold Pocket Watch Porcelain 72
- 99. Bowl and Box Set Porcelain 75

**Robyn Wynyard, Auckland**

- 100. Celadon Vase A Porcelain 36
- 101. Celadon Vase B Porcelain 35
- 102. Celadon Vase C Porcelain 30

**Steve Yeoman, Auckland**

- 103. Porcelain Vase A Wood-fired Porcelain 32
- 104. Porcelain Vase B Wood-fired Porcelain 24
- 105. Porcelain Vase C Wood-fired Porcelain 42



John Parker, Auckland: Pitted White Bowls A, B, C and D, Stoneware



## CANTERBURY REGION

Selectors: Nola Barron, David Brokenshire & Rex Valentine

### Aina Apse, Christchurch

- |      |            |             |      |
|------|------------|-------------|------|
| 106. | Floor Bowl | Earthenware | \$65 |
| 107. | Fruit Bowl | Earthenware | 55   |

### Raewyn Atkinson, Christchurch

- |      |          |                      |     |
|------|----------|----------------------|-----|
| 108. | Galleon  | Wood-fired Stoneware | 150 |
| 109. | Bowl     | Stoneware            | 25  |
| 110. | Minarets | Stoneware            | 150 |

### Nola Barron, Christchurch

- |      |     |           |    |
|------|-----|-----------|----|
| 111. | Pot | Stoneware | 90 |
|------|-----|-----------|----|

### Gita Berzins, Christchurch

- |      |                |           |     |
|------|----------------|-----------|-----|
| 112. | Erosion Form A | Stoneware | 140 |
| 113. | Erosion Form B | Stoneware | 60  |
| 114. | Erosion Form C | Stoneware | 40  |

### David Brokenshire, Christchurch

- |      |              |           |    |
|------|--------------|-----------|----|
| 115. | Cloud Bowl 1 | Porcelain | 80 |
| 116. | Cloud Bowl 2 | Porcelain | 80 |

### Averil Cave, Christchurch

- |      |           |           |    |
|------|-----------|-----------|----|
| 117. | Casserole | Stoneware | 48 |
| 118. | Jug       | Stoneware | 20 |

### Sally Connolly, Christchurch

- |      |          |           |    |
|------|----------|-----------|----|
| 119. | Slab Pot | Stoneware | 50 |
|------|----------|-----------|----|

### Valerie Crichton, Christchurch

- |      |          |                       |    |
|------|----------|-----------------------|----|
| 120. | Cylinder | Pit-fired Earthenware | 50 |
|------|----------|-----------------------|----|

### Ann Davie, Christchurch

- |      |         |           |      |
|------|---------|-----------|------|
| 121. | Plate A | Stoneware | \$60 |
| 122. | Plate B | Stoneware | 50   |

### Frederika Ernten, Christchurch

- |      |        |           |    |
|------|--------|-----------|----|
| 123. | Teapot | Stoneware | 45 |
| 124. | Bowl   | Stoneware | 45 |
| 125. | Bottle | Stoneware | 36 |

### Lawrence Ewing, Cust

- |      |        |           |     |
|------|--------|-----------|-----|
| 126. | Vase   | Stoneware | 325 |
| 127. | Plate  | Stoneware | 195 |
| 128. | Bottle | Stoneware | 195 |



May Wright, Canterbury: Jars with Lids B, A and C, Salt-glazed Stoneware



**Anthea Grob, Christchurch**

129. Pot with Hands Pit-fired Stoneware \$50

**Jan Harris, Canterbury**

130. Bottle Smoked Stoneware 25

**Robyn & Tim Lindley, Christchurch**

131. Bowl Stoneware 36

**Rosemary Perry, Christchurch**

132. Iron Red Onion Jar Stoneware 75  
133. Multi-coloured Bowl Stoneware 75

**Rex Valentine, Lyttelton**

134. Vase A Stoneware 35  
135. Vase B Stoneware 35  
136. Vase C Stoneware 25  
137. Set of 4 Herb Tea Cups & Saucers Stoneware 45

**Ngaire Van Grondelle, Christchurch**

138. Bowl with Copper Pink Decoration Stoneware 55

**Robert Wagoner, Christchurch**

139. Jar Stoneware 120

**May Wright, Sheffield**

140. Jar with Lid A Salt-glazed Stoneware 25  
141. Jar with Lid B Salt-glazed Stoneware 18  
142. Jar with Lid C Salt-glazed Stoneware 14

**HAWKES BAY REGION**

Selectors: Warner Haldane, Chester Nealie & Fairlie Rowe

**Alan Gordon, Gisborne**

143. Bottle Pit-fired Stoneware \$80  
144. Jar Pit-fired Stoneware 65

**Ingeborg Jenssen, Napier**

145. Decorative Pot A Pit-fired Stoneware 35  
146. Decorative Pot B Pit-fired Stoneware 40

**Chloe King, Havelock North**

147. Pouff Pot Stoneware 100  
148. Jar Stoneware 350  
149. Pot Stoneware 200

**Mandy Linwood, Hastings**

150. Handcrafted Bowl Stoneware 40

**Penny Madden, Napier**

151. Textured Thrown Pot Stoneware 35

**Julie Mair, Hastings**

152. Round Seaform Stoneware & Porcelain 25

**Bruce Martin, Hastings**

153. Mizusachi Anagama-fired Stoneware 300  
154. Hanaire Anagama-fired Stoneware 300  
155. The Wreck Anagama-fired Stoneware NFS  
156. Kakahana Anagama-fired Stoneware 30

**Estelle Martin, Hastings**

157. Tsubo A Anagama-fired Stoneware 650  
158. Tsubo B Anagama-fired Stoneware 650



159. Tokkuri Anagama-fired Stoneware \$ 30  
 160. Kakahana Anagama-fired Stoneware 30

**Helen Mason, Tokomaru Bay**

161. Chunks from Outer Space Series III Stoneware 75  
 162. Chunks from Outer Space Series IV Stoneware 75

**Gaeleen Morley, Taradale**

163. Trio Fume-fired Porcelain 75  
 164. Solo A Fume-fired Porcelain 25  
 165. Solo B Fume-fired Porcelain 25

**Fairlie Rowe, Havelock North**

166. Feathered Form A Porcelain & Feathers 55  
 167. Feathered Form B Porcelain & Feathers 40



Katherine Sanderson, Manawatu: Jar with Terra Sigillata Decoration, Earthenware

**MANAWATU REGION**

Selectors: Anneke Borren, Margaret Taylor & Paul Winspear.

**Val Bryant, Feilding**

168. Bowl, Pinched Edge Porcelain \$16

**Ross Mitchell-Anyon, Wanganui**

169. Planter A Stoneware 70  
 170. Planter B Stoneware 70  
 171. Covered Jar Stoneware 18  
 172. Pestle & Mortar Stoneware 20  
 173. Six Wine Cups Stoneware 25

**Tony Reardon, Pahiatua**

174. Bottle Fly-ash glazed Stoneware 42  
 175. Bottle with Tap Fly-ash glazed Stoneware 46  
 176. Pair of Gulley-mouthed Pitchers Stoneware 50

**Katherine Sanderson, Palmerston North**

177. Jar with Terra Sigillata Decoration Earthenware 95  
 178. Jug with Terra Sigillata Decoration Earthenware NFS  
 179. Storage Pot with Terra Sigillata Decoration Earthenware 40  
 180. Platter Raku 95



## NELSON REGION

Selectors: John Crawford, Peter Gibbs & Royce McGlashen

### John Crawford, Ngakawau

181.	Pair of Landscape Vases	Stoneware	\$280
182.	Reclining Women (2 pieces)	Stoneware	120
183.	Bowl	Stoneware	59
184.	Box A	Porcelain	35
185.	Box B	Porcelain	35

### Vic Evans, Wakefield

186.	Copper Red Vase A	Porcelain	45
187.	Barium Blue Bowl	Porcelain	30
188.	Copper Red Vase B	Porcelain	75
189.	Barium Blue Vase	Porcelain	60

### Steve Fullmer, Upper Moutere

190.	Jug	Stoneware	50
------	-----	-----------	----

### Peter Gibbs, Brightwater

191.	Crock A	Salted Stoneware	75
192.	Crock B	Salted Stoneware	60
193.	Jar	Salted Stoneware	95
194.	Bottle	Salted Stoneware	95

### David Griffith, Nelson

195.	Red Pot	Low-fired Stoneware	30
196.	Yellow & White Pot	Low-fired Stoneware	30
197.	Red Bowl	Low-fired Stoneware	30
198.	Yellow Bowl	Low-fired Stoneware	30

### Lynne Griffith, Nelson

199.	White Pot	Sawdust-fired Earthenware	15
200.	Pink Pot	Sawdust-fired Earthenware	15



Royce McGlashen, Nelson: Teapots A, B and C, Saggar-fired Porcelain

### Margaret Hunt, Waimangaroa

201.	Bowl	Porcelain	NFS
------	------	-----------	-----

### Marjorie Johnston, Hope

202.	Bottle	Stoneware	\$10
------	--------	-----------	------

### Royce McGlashen, Brightwater

203.	Country Picnic A	Porcelain	190
204.	Country Picnic B	Porcelain	80
205.	Teapot A	Saggar-fired Porcelain	70
206.	Teapot B	Saggar-fired Porcelain	70
207.	Teapot C	Saggar-fired Porcelain	70

### Toni Maurenbrecher, Motueka

208.	Set of 2 Raku Pieces	Raku	40
209.	Plate	Raku	24

### Darryl Robertson, Motueka

210.	Burnt Landscape A	Stoneware	26
211.	Burnt Landscape B	Stoneware	41



## OTAGO REGION

Selectors: Frank Dickenson, Neil Grant & Helen Telford

### Neil Grant, Dunedin

- |      |                       |           |      |
|------|-----------------------|-----------|------|
| 212. | Brush Decorated Plate | Stoneware | \$95 |
| 213. | Brush Decorated Bowl  | Stoneware | 45   |

### Danny Moorwood, Dunedin

- |      |          |           |    |
|------|----------|-----------|----|
| 214. | Bottle A | Stoneware | 52 |
| 215. | Bottle B | Stoneware | 24 |

### Gillian Pope, Dunedin

- |      |                 |                      |    |
|------|-----------------|----------------------|----|
| 216. | Slip-carved Jar | Wood-fired Stoneware | 80 |
| 217. | White Jar       | Wood-fired Stoneware | 80 |

### Mike Searle, Mosgiel

- |      |     |           |    |
|------|-----|-----------|----|
| 218. | Box | Stoneware | 28 |
|------|-----|-----------|----|

### Della Slattery, Coal Creek

- |      |           |                      |    |
|------|-----------|----------------------|----|
| 219. | Decanter  | Wood-fired Stoneware | 65 |
| 220. | Bowl      | Wood-fired Stoneware | 25 |
| 221. | Jewel Box | Wood-fired Stoneware | 20 |

### Rob Wood, Coal Creek

- |      |        |                      |    |
|------|--------|----------------------|----|
| 222. | Bowl A | Wood-fired Stoneware | 20 |
| 223. | Bowl B | Wood-fired Stoneware | 20 |
| 224. | Bowl C | Wood-fired Stoneware | 28 |

## SOUTHLAND REGION

Selectors: Kobi Bosshard, Pat Bosshard & Neil Grant

### Ann Clifford, Wyndham

- |      |                  |           |      |
|------|------------------|-----------|------|
| 225. | Emerging Ideas A | Porcelain | \$40 |
| 226. | Emerging Ideas B | Porcelain | 40   |
| 227. | Emerging Ideas C | Porcelain | 40   |
| 228. | Emerging Ideas D | Porcelain | 40   |
| 229. | Emerging Ideas E | Porcelain | 40   |

### Olwyn Dykes, Invercargill

- |      |            |                      |    |
|------|------------|----------------------|----|
| 230. | Cylinder A | Wood-fired Stoneware | 20 |
| 231. | Cylinder B | Wood-fired Stoneware | 23 |

### Helen Faulkner, Invercargill

- |      |         |           |    |
|------|---------|-----------|----|
| 232. | Plate A | Stoneware | 60 |
| 233. | Plate B | Stoneware | 60 |
| 234. | Plate C | Stoneware | 60 |

### Murray Fox, Invercargill

- |      |            |           |    |
|------|------------|-----------|----|
| 235. | Bowl       | Stoneware | 40 |
| 236. | Large Bowl | Stoneware | 85 |

### Frances Fredric, Invercargill

- |      |          |   |    |
|------|----------|---|----|
| 237. | Ring Box | Cobalt with Platinum Oxidised Stoneware | 35 |
| 238. | Ring Box | Cobalt with Platinum Oxidised Stoneware | 20 |

### Peter Johnson, Riverton

- |      |            |           |    |
|------|------------|-----------|----|
| 239. | Ring Box A | Stoneware | 25 |
| 240. | Ring Box B | Stoneware | 25 |

### Allan Young, Invercargill

- |      |               |                      |    |
|------|---------------|----------------------|----|
| 241. | Jar           | Wood-fired Stoneware | 30 |
| 242. | Decorated Jar | Stoneware            | 18 |



## TARANAKI REGION

Selectors: Rosemarie Brittain, Don Driver & Mike Spencer.

### Nick Brandon, Inglewood

- |      |                                       |                      |       |
|------|---------------------------------------|----------------------|-------|
| 243. | Red Bottle                            | Wood-fired Stoneware | NFS   |
| 244. | Black Jar                             | Wood-fired Stoneware | \$350 |
| 245. | Shino Jar                             | Wood-fired Stoneware | 350   |
| 246. | Black, Green & Red Bottles (3 pieces) | Wood-fired Stoneware | 550   |

### Jane Capon, New Plymouth

- |      |                      |           |    |
|------|----------------------|-----------|----|
| 247. | Taranaki Landscape A | Porcelain | 60 |
| 248. | Taranaki Landscape B | Porcelain | 60 |
| 249. | Taranaki Landscape C | Porcelain | 60 |

### Nolene Davidson, New Plymouth

- |      |                             |           |    |
|------|-----------------------------|-----------|----|
| 250. | Trinket Box with Chun Glaze | Porcelain | 32 |
|------|-----------------------------|-----------|----|

### Roger King, Inglewood

- |      |             |           |     |
|------|-------------|-----------|-----|
| 251. | Wine Bottle | Stoneware | 28  |
| 252. | Vase        | Stoneware | NFS |
| 253. | Large Jar   | Stoneware | 350 |

### Carolyne Manins, Inglewood

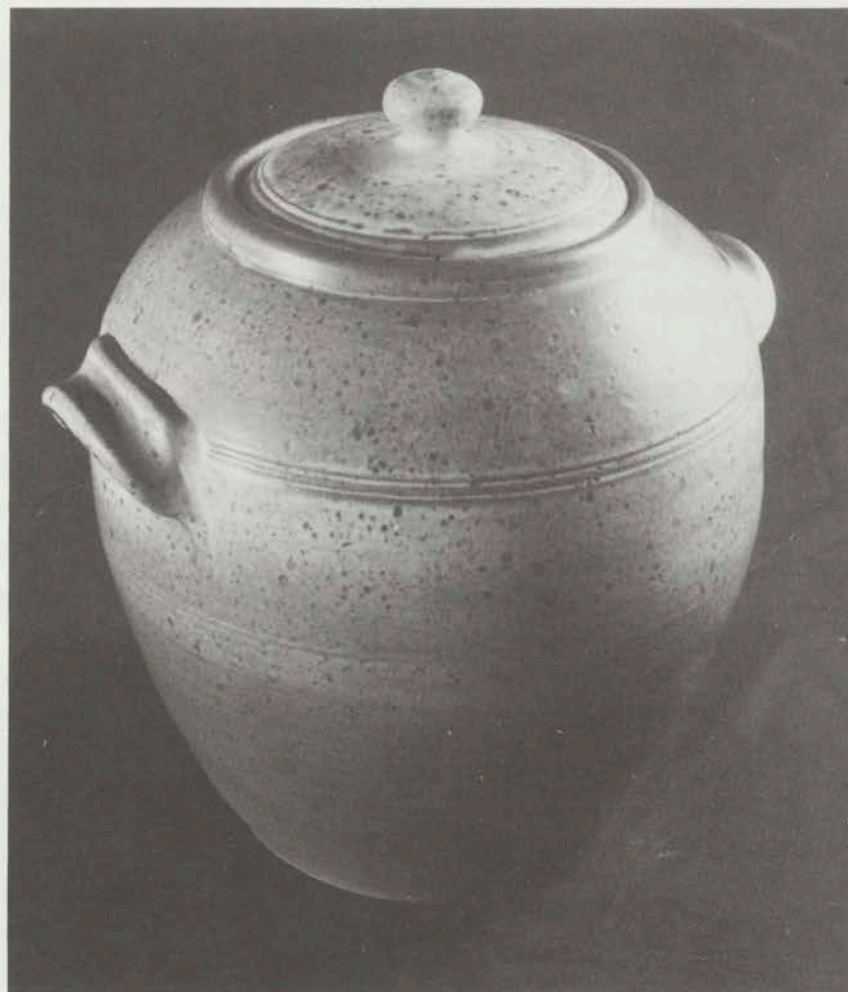
- |      |          |                      |    |
|------|----------|----------------------|----|
| 254. | Cylinder | Wood-fired Stoneware | 48 |
|------|----------|----------------------|----|

### Rusty Ritchie, Toko

- |      |         |           |     |
|------|---------|-----------|-----|
| 255. | Tea Pot | Stoneware | 36  |
| 256. | Bottle  | Stoneware | 150 |

### Robin Sinclair, New Plymouth

- |      |        |                     |    |
|------|--------|---------------------|----|
| 257. | Sphere | Pit-fired Stoneware | 50 |
|------|--------|---------------------|----|



Mike Spencer, Taranaki: Storage Jar, Stoneware

### Lynn Spencer, Okato

- |      |         |           |      |
|------|---------|-----------|------|
| 258. | Tea Pot | Stoneware | NFS  |
| 259. | Jug     | Stoneware | \$50 |
| 260. | Vase    | Stoneware | 35   |
| 261. | Jar     | Stoneware | 200  |

### Mike Spencer, Okato

- |      |             |           |     |
|------|-------------|-----------|-----|
| 262. | Tea Pot     | Stoneware | 30  |
| 263. | Storage Jar | Stoneware | 200 |



## WAIKATO REGION

Selectors: Ken Gorbey, Margaret Symes & Howard Williams.

### Barry Brickell, Coromandel

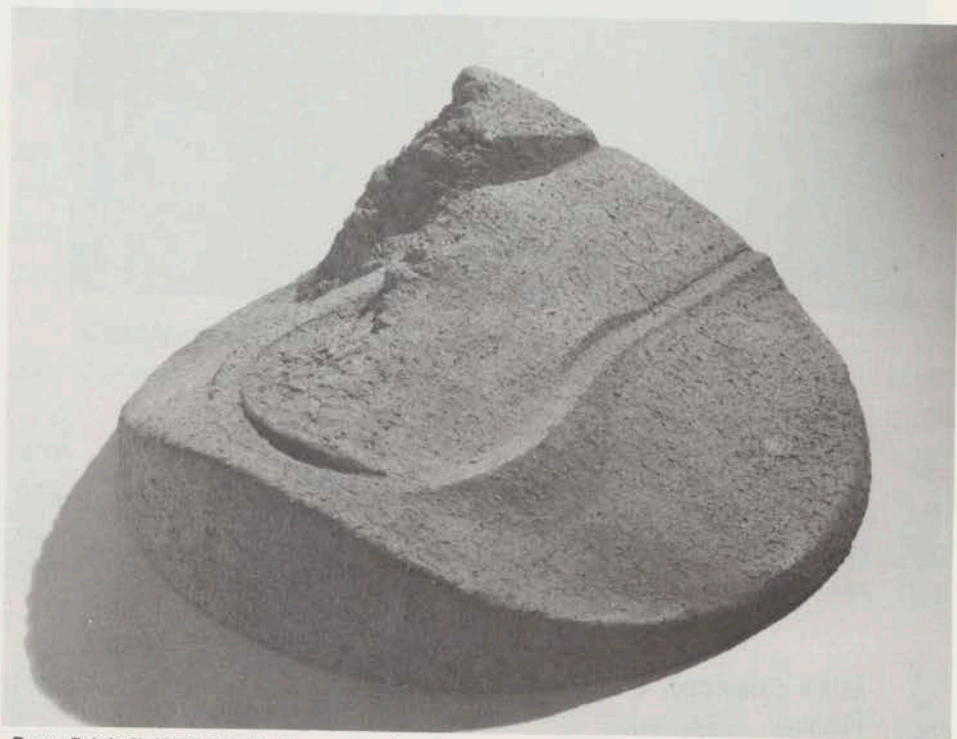
264. *Tribumal* Wood-fired Terracotta \$1,200  
265. *Striking a Grade - Circular Relief Tile* Wood-fired Terracotta 300

### Suzanne Catley, Hamilton

266. *Porcelain Forms I* Porcelain 50  
267. *Porcelain Forms III* Porcelain 45

### Tricia Hansen, Hamilton

268. *Pair of Blue Agate Bowls* Porcelain 35



Barry Brickell, Waikato: *Striking a Grade - Circular Relief Tile*, Wood-fired Terracotta

### Sue Judd, Hamilton

269. *Pair of Jars* Stoneware \$70

### Sue Knowles, Hamilton

270. *Bowl Form* Pit-fired Porcelain 55  
271. *Fantasy A* Low-fired Porcelain 50  
272. *Fantasy B* Low-fired Porcelain 50  
273. *Fantasy C* Low-fired Porcelain 50

### Val McArthur, Hamilton

274. *Black & White Cylinder* Porcelain 25  
275. *Trinket Box* Porcelain 45  
276. *Bowl* Porcelain 30

### Jan White, Hamilton

277. *Sculpture* Wood-fired Terracotta 950



## WELLINGTON REGION

Selectors: Jean Hastedt, Guy Ngan & Mirek Smisek.

### Pamella Annsouth, Te Horo

- |      |                           |                       |       |
|------|---------------------------|-----------------------|-------|
| 278. | Mannequin                 | Stoneware             | \$350 |
| 279. | Pair of Shino Grass Vases | Stoneware             | 25    |
| 280. | 3-piece Teaset            | Salt-glazed Stoneware | 60    |

### Doreen Blumhardt, Wellington

- |      |                    |           |     |
|------|--------------------|-----------|-----|
| 281. | Carved Terrace Pot | Stoneware | 420 |
| 282. | Impressed Pot      | Stoneware | 150 |

### Anneke Borren, Paraparaumu

- |      |                           |           |    |
|------|---------------------------|-----------|----|
| 283. | Black Wooden Lidded Pot A | Stoneware | 68 |
| 284. | Black Wooden Lidded Pot B | Stoneware | 46 |
| 285. | Black Pot                 | Stoneware | 56 |

### Flora Christeller, Wellington

- |      |                        |           |     |
|------|------------------------|-----------|-----|
| 286. | Pair of Terrace Stools | Stoneware | 250 |
|------|------------------------|-----------|-----|

### Murray Clayton, Wellington

- |      |         |           |    |
|------|---------|-----------|----|
| 287. | Tea Pot | Stoneware | 34 |
|------|---------|-----------|----|

### Chris Goslin, Raumati Beach

- |      |        |           |    |
|------|--------|-----------|----|
| 288. | Bowl A | Stoneware | 25 |
| 289. | Bowl B | Stoneware | 18 |

### Jean Hastedt, Paraparaumu

- |      |       |           |    |
|------|-------|-----------|----|
| 290. | Box A | Porcelain | 50 |
| 291. | Box B | Porcelain | 65 |
| 292. | Box C | Porcelain | 30 |

### Raeburn Laird, Lower Hutt

- |      |                       |           |    |
|------|-----------------------|-----------|----|
| 293. | Black and Lustre Dish | Stoneware | 50 |
|------|-----------------------|-----------|----|

### Jean McKinnon, Eastbourne

- |      |                           |           |      |
|------|---------------------------|-----------|------|
| 294. | Unfolding Form (2 pieces) | Porcelain | \$85 |
| 295. | Form                      | Porcelain | 65   |

### Wendy Masters, Paraparaumu

- |      |                |                         |    |
|------|----------------|-------------------------|----|
| 296. | Fantail Pigeon | Porcelain on Punga Base | 85 |
| 297. | Mocha Box A    | Porcelain               | 29 |
| 298. | Mocha Box B    | Porcelain               | 29 |

### Patti Meads, Wellington

- |      |                                       |           |    |
|------|---------------------------------------|-----------|----|
| 299. | Oval Box with Gold & Platinum Lustres | Porcelain | 75 |
| 300. | Lidded Box with Gold Lustre           | Porcelain | 75 |
| 301. | Bottle with Gold & Platinum Lustres   | Porcelain | 90 |

### Sel Ling Ngan, Wellington

- |      |                              |           |    |
|------|------------------------------|-----------|----|
| 302. | Bowl with Copper Red Glaze A | Porcelain | 45 |
| 303. | Bowl with Copper Red Glaze B | Porcelain | 40 |

### Debbie Pointon, Raumati Beach

- |      |                    |                                       |    |
|------|--------------------|---------------------------------------|----|
| 304. | Mai Mai            | Porcelain, Bamboo & Thread            | 60 |
| 305. | Bowl Fragmentation | Porcelain, Bamboo & Thread            | 85 |
| 306. | Drum               | Porcelain, Leather, Feathers & Thread | 90 |

### David Shearer, Wellington

- |      |                  |           |     |
|------|------------------|-----------|-----|
| 307. | Fat Shino Bottle | Stoneware | 110 |
|------|------------------|-----------|-----|

### Jennifer Shearer, Wellington

- |      |                               |           |    |
|------|-------------------------------|-----------|----|
| 308. | Dragonfly Bowl Set (5 pieces) | Porcelain | 90 |
|------|-------------------------------|-----------|----|

### Tony Sheppard, Wellington

- |      |                    |                        |    |
|------|--------------------|------------------------|----|
| 309. | Hand-formed Bowl A | Saggar-fired Porcelain | 25 |
| 310. | Hand-formed Bowl B | Saggar-fired Porcelain | 18 |



### Mirek Smisek, Te Horo

- |      |                         |                                |       |
|------|-------------------------|--------------------------------|-------|
| 311. | Wine Bottle & 6 Goblets | Salt-glazed Stoneware & Bamboo | \$141 |
| 312. | Branch Pot              | Stoneware                      | 550   |
| 313. | Bowl                    | Salt-glazed Porcelain          | 45    |

### Mary Smith, Wellington

- |      |         |                        |    |
|------|---------|------------------------|----|
| 314. | Tea Pot | Sagger-fired Stoneware | 32 |
|------|---------|------------------------|----|

### Julia Van Helden, Eastbourne

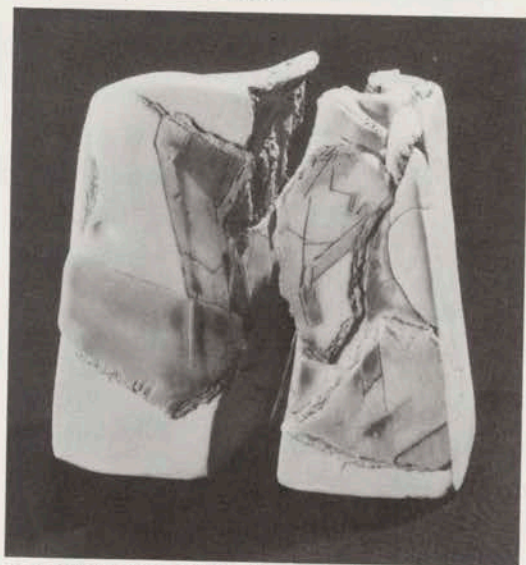
- |      |                     |                                  |    |
|------|---------------------|----------------------------------|----|
| 315. | Unfolding           | Glazed & China-painted Porcelain | 80 |
| 316. | Relating (2 pieces) | Glazed & China-painted Porcelain | 80 |
| 317. | Time Process        | Glazed & China-painted Porcelain | 80 |

### Penny Walker, Eastbourne

- |      |                          |           |    |
|------|--------------------------|-----------|----|
| 318. | Handbuilt Tea Pot Form A | Porcelain | 58 |
| 319. | Handbuilt Tea Pot Form B | Porcelain | 58 |

### Gloria Young, Wellington

- |      |                         |           |    |
|------|-------------------------|-----------|----|
| 320. | Inside Looking Out      | Porcelain | 45 |
| 321. | Sherry for 2 (2 pieces) | Porcelain | 12 |



Julia Van Helden, Wellington: *Relating*,  
Glazed and China-painted Porcelain

### CONDITIONS OF SALES

At least 20% deposit is required to secure purchase of any item, the full balance due when the item is collected at the end of the exhibition.

A payment or deposit is not refundable nor transferable.

Payments must be made in New Zealand currency or by cheque payable to **GOVETT-BREWSTER ART GALLERY**. Mark cheques **NOT NEGOTIABLE**.

On opening night **only**, an intending buyer must collect the sales ticket, bearing the number of the item being purchased, from a sales person in the exhibition area. This ticket is then to be shown at the sales desk in the foyer in order that the purchase be registered in the sales book and payment be received.

### PURCHASERS

Please collect purchased pots from the Gallery from Monday, 21 November to Wednesday, 23 November, 10.30 am - 5 pm.



Miss Emma, Te Heru

- 171 - [illegible] [illegible] [illegible]
- 172 - [illegible] [illegible] [illegible]
- 173 - [illegible] [illegible] [illegible]

Miss Emma, Wellington

- 174 - [illegible] [illegible] [illegible]

CONDITIONS OF SALE

As soon as possible after the date of sale the purchaser shall be required to pay to the vendor the full amount of the purchase price in cash or by cheque or by bank draft payable to the order of the vendor. A deposit of 10% of the purchase price shall be paid on the day of sale. The balance of the purchase price shall be paid within 14 days of the date of sale. If the purchaser fails to pay the purchase price as required, the vendor shall be entitled to resell the property at auction or otherwise without notice to the purchaser and the purchaser shall be liable to pay to the vendor the difference between the price at which the property was sold and the price at which it was resold. The vendor shall not be bound to accept any offer of purchase and the sale shall be subject to the usual conditions of sale.

Miss Emma, Wellington

- 175 - [illegible] [illegible] [illegible]
- 176 - [illegible] [illegible] [illegible]
- 177 - [illegible] [illegible] [illegible]

Miss Emma, Wellington

- 178 - [illegible] [illegible] [illegible]
- 179 - [illegible] [illegible] [illegible]





