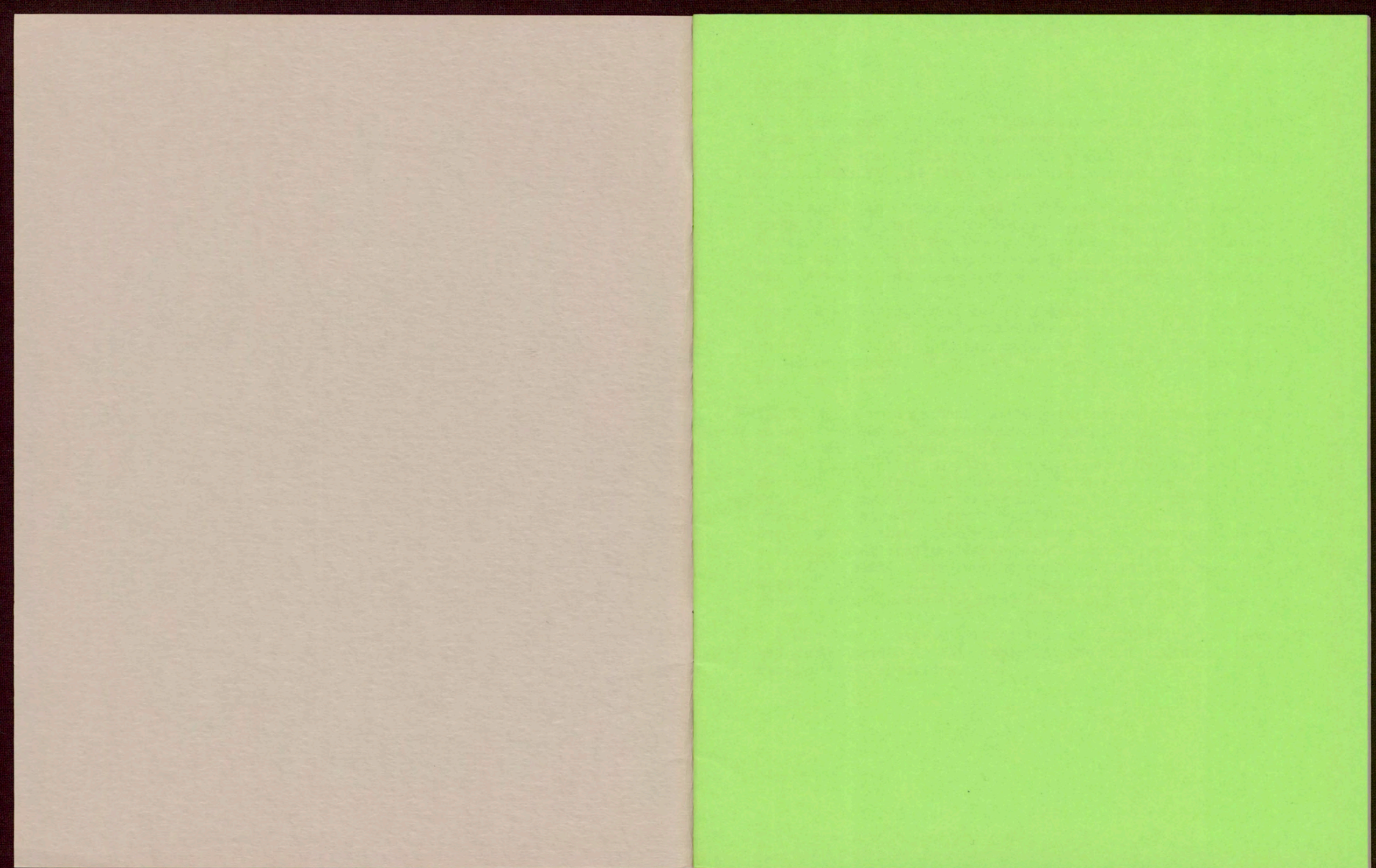

PERMANENT COLLECTION
24 APRIL — 17 MAY 1981

GOVETT-BREWSTER ART GALLERY
QUEEN STREET NEW PLYMOUTH



INTRODUCTION

Since September 1979 some 80 contemporary New Zealand paintings, works on paper, sculpture and ceramics have been added to the Gallery Permanent Collection. This exhibition will display collectively for the first time, such acquisitions.

Concurrently an excellent exhibition of Permanent Collection works is being shown at the Manawatu Art Gallery, Palmerston North. Add to this the Len Lye Foundation Collection housed at the Gallery as well as other works in storage and on loan and one begins to see a strength in the Gallery collections.

Compared with provincial and city galleries of similar size and/or age, the Gallery Permanent Collection is looking very strong indeed. A national reputation for acquiring 'difficult' contemporary works of art adds further to our increasing professional standing.

All is not a rose garden! Gallery purchasing funds are derived solely from bequeathed investments. While this guarantees a high level of purchasing freedom, it also presents some problems. The national inflation rate over the past four years has seriously diminished the purchasing power of the available annual funds. It has been suggested that the New Plymouth City Council should make an annual grant available for acquisitions. Another suggestion is that Gallery supporters form a buying group with each supporter contributing by taking up one, or a number of shares at \$500.00 each. This funding would be directed towards buying work of a more 'difficult' or 'conceptual' nature. Gifts are another valuable way of adding to the Gallery collections.

The Director is always seeking ways of encouraging more concern and participation in this important area and would be pleased to receive any suggestions.

PAINTINGS

PHILIP CLAIRMONT

- 1 Bending Female Figure - Washbasin and Mirror 1980
Oil and acrylic on unbleached jute
Diptych, Each panel 2320 x 910mm
Monica Brewster Bequest Account

RICHARD KILLEEN

- 2 Collection from a Japanese Garden 1937 1978
30 Cutout aluminium pieces of insects, plants
and geometric shapes
Random display (approx 4500 x 2000mm)
Monica Brewster Bequest Account

TONY LANE

- 3 Resurrection 1980
Oil on hessian on board
Triptych, 2 panels 1120 x 685
1 panel 1120 x 690mm
Acquisitions Account

ALAN MADDOX

- 4 Jungle Boy 1976
Oil on cotton
2000 x 2350mm
Monica Brewster Bequest Account

ROBERT McLEOD

- 5 White Delight 1976
Pencil and acrylic on canvas
1570 x 3770mm
Gifted by the Artist

DON PEEBLES

- 6 Untitled Blue/Green 1979
Acrylic paint on canvas
Diptych, part 1, 1800 x 2400
part 2, 1800 x 810mm
Monica Brewster Bequest Account

GORDON WALTERS

- 7 Hiwi 1966
Acrylic on canvas backed with hardboard
1210 x 910mm
Acquisitions Account

GORDON WALTERS

- 8 Painting H 1975
Oil on canvas
915 x 915mm
Monica Brewster Bequest Account

SCULPTURES

BILLY APPLE

- 9 Alterations 1980
Widening of the existing stairway between B & C decks
Construction of solid balustrades between B & C decks
Monica Brewster Bequest Account

BARRY BRICKELL

- 10 Taxadoon 1980
Wood - fired terracotta
500 x 260 x 260mm
Monica Brewster Bequest Account

BARRY BRICKELL

- 11 Symetromorph lugged 1980
Wood-fired terracotta
840 x 270 x 250mm
Monica Brewster Bequest Account

BARRY BRICKELL

- 12 Businomorph II 1980
Wood-fired terracotta
670 x 200 x 225mm
Monica Brewster Bequest Account

BARRY BRICKELL

- 13 Torsomorph 1980
Wood-fired terracotta
760 x 230 x 200mm
Monica Brewster Bequest Account

STEPHEN CLARK

- 14 Bowman 4 1980
Polished timber and linen thread
Monica Brewster Bequest Account

KATE COOLAHAN

- 15 Undercover Flight c.1979
String, fabric, handmade paper and wood
1840 x 1280 x 2090mm
Acquisitions account

DENYS WATKINS

- 16 Work 1978
Wood, glass, straw, canvas and miscellaneous objects
550 x 1650 x 1650mm
D A Atmore Legacy and Monica Brewster Bequest Account

WORKS ON PAPERBARRY CLEAVIN

- 17 For the True Anatomy, 23/30, 1975
Copperplate etching on paper
295 x 505mm
Acquisitions Account

BARRY CLEAVIN

- 18 Early Bird, 14/40 1976
Copperplate etching on paper
270 x 315mm
Acquisitions Account

BARRY CLEAVIN

- 19 For the True Anatomy - Pegasus, 22/30, 1975
Copperplate etching on paper
225 x 253mm
Acquisitions Account

BARRY CLEAVIN

- 20 For the True Anatomy - Flying Fish, 14/30 1975
Copperplate etching on paper
175 x 248mm
Acquisitions Account

BARRY CLEAVIN

- 21 For the True Anatomy - Eye Piece, 15/30, 1977
Copperplate etching on paper
122 x 113mm
Acquisitions Account

BARRY CLEAVIN

- 22 For the True Anatomy - Demented Chook, 13/40 1979
Copperplate etching on paper
280 x 193mm
Acquisitions Account

BARRY CLEAVIN

- 23 Lioness, 2/30, 1976
Copperplate etching on paper
205 x 321mm
Acquisitions Account

BARRY CLEAVIN

- 24 For the True Anatomy - Minotaur, 2/30, 1975
Copperplate etching on paper
190 x 150mm
Acquisitions Account

PHILIP CLAIRMONT

- 25 Study for Bending Female Figure - Washbasin & Mirror, 1980
Gouache on paper
560 x 400mm
Gifted by Artist

PHILIP CLAIRMONT

- 26 Art Is My Life 1980
Lino cut printed with enamel on arches paper
1080 x 755mm
Monica Brewster Bequest Account

FIONA CLARK

- 27 Maime, at Miss N.Z. Drag Queen Ball 1975
Coloured photograph
250 x 165mm
Monica Brewster Bequest Account

FIONA CLARK

- 28 Sheila, Contestant at Miss N.Z. Drag Queen Ball 1975
Coloured photograph
250 x 165mm
Monica Brewster Bequest Account

FIONA CLARK

- 29 Diana & Boyfiend, at Miss Drag Queen Ball 1975
Coloured photograph
165 x 245mm
Monica Brewster Bequest Account

FIONA CLARK

- 30 Diana & Sheila, "Mojos" Nightclub 1975
Coloured photograph
168 x 246mm
Monica Brewster Bequest Account

FIONA CLARK

- 31 Diana, "Mojos" Nightclub 1975
Coloured photograph
250 x 165mm
Monica Brewster Bequest Account

FIONA CLARK

- 32 Tina "Mojos" Nightclub 1975
Coloured photograph
250 x 165mm
Monica Brewster Bequest Account

FIONA CLARK

- 33 Geraldine at Home 1975
Coloured photograph
250 x 165mm
Monica Brewster Bequest Account

FIONA CLARK

- 34 Jackie at "Mojos" Nightclub 1975
Coloured photograph
245 x 165mm
Monica Brewster Bequest Account

FIONA CLARK

- 35 Chrissy "Mojos" Nightclub 1975
Coloured photograph
245 x 165mm
Monica Brewster Bequest Account

FIONA CLARK

- 36 Belinda-Lee, Miss N.Z. Drag Queen 1975 at "Mojos"
Nightclub 1975
Coloured photograph
245 x 165mm
Monica Brewster Bequest Account

KATE COOLAHAN

- 37 Victoria in the Pacific 1976
Photo and auto etching
505 x 492mm
Monica Brewster Bequest Account

KATE COOLAHAN

- 38 Eggs Geneology, 1/6, 1976
Photo and auto etching
630 x 420mm
Monica Brewster Bequest Account

GORDON CROOK

- 39 Untitled (based on the numeral 5), 7/10 1979
Silkscreen on paper
805 x 585mm
Gibson Bequest Account

GORDON CROOK

- 40 Untitled (based on the numeral 5), 7/10 1979
Silkscreen on paper
805 x 585mm
Gibson Bequest Account

GORDON CROOK

- 41 Untitled (based on the numeral 5), 7/10 1979
Silkscreen on paper
805 x 585mm
Gibson Bequest Account

GORDON CROOK

42 Untitled (based on the numeral 5), 7/10 1979
Silkscreen on paper
805 x 585mm
Gibson Bequest Account

GORDON CROOK

43 Untitled (based on the numeral 5), 7/10 1979
Silkscreen on paper
805 x 585mm
Gibson Bequest Account

GORDON CROOK

44 Untitled (based on the numeral 5), 7/10 1979
Silkscreen on paper
805 x 585mm
Gibson Bequest Account

GORDON CROOK

45 Untitled (based on the numeral 5), 7/10 1979
Silkscreen on paper
805 x 585mm
Gibson Bequest Account

GORDON CROOK

46 Untitled (based on the numeral 5), 7/10 1979
Silkscreen on paper
805 x 585mm
Gibson Bequest Account

GORDON CROOK

47 Untitled (based on the numeral 5), 7/10 1979
Silkscreen on paper
805 x 585mm
Gibson Bequest Account

GORDON CROOK

48 Untitled (based on the numeral 5), 7/10 1979
Silkscreen on paper
805 x 585mm
Gibson Bequest Account

GORDON CROOK

49 Untitled (based on the numeral 5), 7/10 1979
Silkscreen on paper
805 x 585mm
Gibson Bequest Account

GORDON CROOK

50 Untitled (based on the numeral 5), 7/10 1979
Silkscreen on paper
805 x 585mm
Gibson Bequest Account

GORDON CROOK

51 Untitled (based on the numeral 5), 7/10 1979
Silkscreen on paper
805 x 585mm
Gibson Bequest Account

GORDON CROOK

- 52 Untitled (based on the numeral 5), 7/10 1979
Silkscreen on paper
805 x 585mm
Gibson Bequest Account

ANDREW DRUMMOND

- 53 Crucifixion Performance 1978
Newscippings and photographs on composition board
3650 x 910mm
Diptych, 2 panels, each 855 x 1200mm,
Length of white muslin cloth
Monica Brewster Bequest Account

PAUL HARTIGAN

- 54 Funny Face, 7/25 1979
Screenprint on paper
530 x 635mm
Monica Brewster Bequest Account

PAUL HARTIGAN

- 55 Treasure Chest, 15/30 1979
Screenprint on paper
596 x 570mm
Monica Brewster Bequest Account

TONY LANE

- 56 Six Figures 1979
Pastel on paper
325 x 497mm
Acquisitions Account

VIVIAN LYNN

- 57 Playground I, 7/50 1975
Screenprint on paper
435 x 560mm
Monica Brewster Bequest Account

VIVIAN LYNN

- 58 Playground II, 14/50 1975
Screenprint on paper
420 x 558mm
Monica Brewster Bequest Account

VIVIAN LYNN

- 59 Playground III, 10/50 1975
Screenprint on paper
420 x 560mm
Monica Brewster Bequest Account

VIVIAN LYNN

- 60 Playground IV, 44/50 1975-80
Screenprint on paper
440 x 560mm
Monica Brewster Bequest Account

VIVIAN LYNN

- 61 Playground V, 16/50 1975-80
Screenprint on paper
420 x 560mm
Monica Brewster Bequest Account

VIVIAN LYNN

- 62 Playground VI, 11/50 1975-80
Screenprint on paper
420 x 560mm
Monica Brewster Bequest Account

GORDON WALTERS

- 63 Gouache 1955
Gouache on paper
240 x 300mm
Monica Brewster Bequest Account

GORDON WALTERS

- 64 Gouache 1959
Gouache on paper
355 x 255mm
Monica Brewster Bequest Account

DENYS WATKINS

- 65 A Western Romance, 3/25 1978
Etching on paper
505 x 495mm
Monica Brewster Bequest Account

DENYS WATKINS

- 66 Whispering Hope, 22/25 1975
Etching on paper
295 x 440mm
Monica Brewster Bequest Account

DENYS WATKINS

- 67 Midnight at the Oasis, 4/40 1981
Etching on paper
355 x 415mm
Monica Brewster Bequest Account

DENYS WATKINS

- 68 I have enough Money, 9/25 1980
Etching on paper
265 x 245mm
Monica Brewster Bequest Account

MERVYN WILLIAMS

- 69 Chromatic Invention II, 6/20 1969
Screenprint on paper
445 x 635mm
Monica Brewster Bequest Account

MERVYN WILLIAMS

- 70 Chromatic Variations 12, 3/6 1969
Screenprint on paper
470 x 710mm
Monica Brewster Bequest Account

MERVYN WILLIAMS

- 71 Modulation, 4/20 1977
Screenprint on paper
465 x 360mm
Monica Brewster Bequest Account

MERVYN WILLIAMS

72 | Horus Series XII, 4/25 | 1980
Screenprint on paper
475 x 455mm
Monica Brewster Bequest Account

MERVYN WILLIAMS

73 | Horus Series VII, 4/25 | 1980
Screenprint on paper
470 x 455mm
Gifted by artist

MERVYN WILLIAMS

1989 | Chromatic Variations II, 6/20 | 1989
Screenprint on paper
442 x 635mm
Monica Brewster Bequest Account

MERVYN WILLIAMS

1989 | Chromatic Variations I, 12/8 | 1989
Screenprint on paper
470 x 710mm
Monica Brewster Bequest Account

MERVYN WILLIAMS

1987 | Modulation, 4/20 | 1987
Screenprint on paper
465 x 360mm
Monica Brewster Bequest Account

