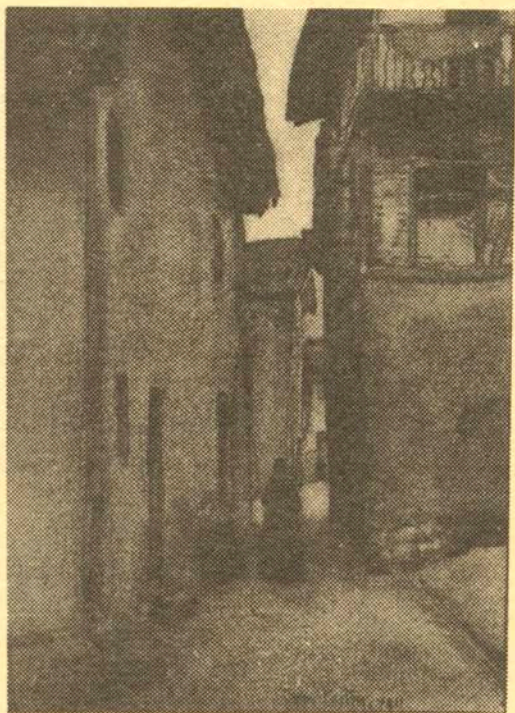


Govett-Brewster
Art Gallery



**paintings from
private collections
in New Plymouth**

22 March to 8 April, 1979

CATALOGUE

1
 DAVID ARMITAGE
Untitled
 Watercolour on paper
 260 x 245mm

2
 ARTIST UNKNOWN
Austrian Peasant Woman 1918
 Ink, raddle, boot polish on straw board
 390 x 315mm

3
 H M L ATCHERLEY
Mt Egmont N Z
 Watercolour on paper
 100 x 145mm

4
 F H ARDEN
Seascape-Waitemata Harbour
 Watercolour on paper
 450 x 660mm

5
 F H ARDEN
Heavy Swell-Wellington
 Watercolour on paper
 580 x 910mm

6
 F H ARDEN
Seascape-Two Sailing Ships
 Watercolour on paper
 560 x 880mm

7
 F H ARDEN
White Canvas
 Watercolour on paper
 850 x 590mm

8
 AUBRY
Maori Bank 1890
 Watercolour on paper
 372 x 599mm

Owen Merton
 Untitled
 1911
 Watercolour on paper
 340x240

9
PHILIP CLAIRMONT
Of Melissa in Reverse 1974
Pastel on paper
420 x 350mm

10
H J COOMBES
Lake Manapouri-N Z Best 1955
Oil on plywood
555 x 914mm

11
WILLIAM DOUGLAS
Charlotte Stuart c1825
Pencil & watercolour on paper
250 x 200mm

12
JOHN DRAWBRIDGE
Young Girl 1954
Chalk on paper
550 x 370mm

13
DONALD SINCLAIR DRIVER
Wood Relief 1965
Wood on plywood
915 x 860mm

14
DONALD SINCLAIR DRIVER
Wood Relief 1967
Wood on plywood
915 x 915mm

15
DONALD SINCLAIR DRIVER
Painted Relief No 5 1971
Acrylic on canvas
1900 x 1840mm

16
DONALD SINCLAIR DRIVER
3 Part Relief 1973
Canvas on wood
550 x 1680mm

17
DONALD SINCLAIR DRIVER
Relief 1974
Stainless steel & aluminium
1365 x 1830mm

18
DONALD SINCLAIR DRIVER
Four Pockets 1976
Wall hanging, on a galvanised iron pipe
of an orange canvas sheet to which 4
vertical canvas pockets are sewn. From
the tops of the 1st, 3rd and 4th pockets
are draped strips (respectively) of the
same canvas, velvet and canvas velvet;
from the 2nd protrudes a stuffed door
stopper of striped ticking.
1744 x 1092mm plus the distance, c483mm,
the longest (1st) strip hangs down.

19
A FISHER
Untitled
Oil on canvas
600 x 500mm

20
A L FOMISON
Judge not 1963
Charcoal on paper
542 x 368mm

21
A L FOMISON
The Young Lady 1963
Charcoal on paper
543 x 366mm

22
CHARLES GRANT
Coventry Cathedral 1872
Watercolour on paper
390 x 280mm

23
PAUL HARTIGAN
Untitled 1976
Lithograph on paper
470 x 465mm

24
 CHRISTINE HELLYAR
 Porphyria Colombina Plus (Seaweed)
 latex moulded from seaweed, with
 wire; water and stones; in a
 perspex 397 x 127mm diameter
 cylinder.

25
 FRANCES HODGKINS
 Italian Fish Wife 1902
 Watercolour on paper
 350 x 240mm

26
 FRANCES HODGKINS
 Untitled
 Watercolour on paper
 200 x 100mm

27
 RALPH HOTERE
 Violet IV 1969
 Brolite lacquer on hardboard
 1206 x 597mm

28
 G C KERR
 Untitled pre-1880
 Oil on canvas
 1015 x 1270mm

29
 TOM KREISLER
 Coat Six 1969
 Acrylic on canvas
 2270 x 1300mm

30
 KUNICHIKA
 Untitled
 Woodcut on rice paper
 285 x 650mm

31
 J A LACH
 Fish Story 1967
 Oil on hardboard
 340 x 515mm

32
 LOUISE LEWIS
 Spring 1968
 Acrylic on paper
 861 x 703mm

33
 COLIN JOHN McCAHON
 Three Vases c1937
 Oil on cardboard
 380 x 470mm

34
 COLIN JOHN McCAHON
 Ellespie 1938
 Ink on plywood
 345 x 290mm

35
 COLIN JOHN McCAHON
 The Singing Women 1945-6
 Oil on paper
 420 x 470mm

36
 COLIN JOHN McCAHON
 King of the Jews 1947
 Oil on cardboard
 925 x 507mm

37
 COLIN JOHN McCAHON
 Foothills under Snow 1949
 Oil on cardboard
 510 x 641mm

38
 COLIN JOHN McCAHON
 The Manukau from Wood Bay c1954
 Gouache on paper
 553 x 760mm

39
 COLIN JOHN McCAHON
 Kahikatea 1955
 Oil on hardboard
 1209 x 759mm

40
COLIN JOHN McCAHON
I. one, one 1959
Butex on hardboard
1210 x 600mm

41
COLIN JOHN McCAHON
Gate 10 1961
Solpah on hardboard
1217 x 905mm

42
COLIN JOHN McCAHON
The Third Bellini Madonna 1961-62
Dulux on hardboard
1216 x 748mm

43
COLIN JOHN McCAHON
Headlands (Landscape Series D) 1963
Oil on jute canvas
1760 x 930mm

44
COLIN JOHN McCAHON
Waterfall 1964
Oil on hardboard
197 x 293mm

45
COLIN JOHN McCAHON
Still Life with Altar IV 1967
Acrylic on hardboard
518 x 980mm

46
COLIN JOHN McCAHON
North Otago 1967
Acrylic on hardboard
605 x 1206mm

47
COLIN JOHN McCAHON
North Otago 1967
Oil on hardboard
905 x 1210mm

48
COLIN JOHN McCAHON
Te Rerenga Wairua 1969
Acrylic or pva on hardboard
1050 x 973mm

49
COLIN JOHN McCAHON
Jump (E3) 1973
Acrylic on jute canvas
933 x 480mm

50
COLIN JOHN McCAHON
Rosegarden IV 1974
Acrylic on jute canvas
925 x 598mm

51
COLIN JOHN McCAHON
Birds, Muriwai 1975
Acrylic on jute canvas
433 x 927mm

52
COLIN JOHN McCAHON
Thinking of Felix Randall (No 9,
Angels & Bed Series) 1977
Acrylic on Steinback paper
732 x 1105mm

53
T A McCORMACK
West Wind 1941
Watercolour on paper
190 x 280mm

54
T A McCORMACK
Untitled
Watercolour on paper
560 x 380mm

55
JOHN McLEAN
Epiphyte 1977
Oil on board
1740 x 1108mm

56
JOHN McLEAN
Untitled
Oil on board
200 x 320mm

57
OWEN MERTON
Untitled 1911
Watercolour on paper
340 x 240mm

58
JOHN MOFFITT
To Bed (from Miner Series) 1967
Oil on hardboard
580 x 603mm

59
S H MORTON
Untitled 1885
Watercolour on paper
620 x 390mm

60
S H MORTON
Untitled
Watercolour on paper
550 x 455mm

61
D J PAYNE
The Blue Dress 1915
Watercolour on paper
550 x 265mm

62
JOHN RITCHIE
The Main North Road 1950
Oil on textured board
500 x 600mm

63
SALVENDY
Peasants, Slovakia 1930
Watercolour on paper
280 x 380mm
Monica Brewster Collection

64
SALVENDY
San Giorgio 1937
Watercolour on paper
465 x 320mm
Monica Brewster Collection

65
SALVENDY
Pirano Italy 1937
Watercolour on paper
360 x 455mm
Monica Brewster Collection

66
SALVENDY
Selling Pots Michalovcy 1937
Watercolour on paper
365 x 465mm
Monica Brewster Collection

67
HELEN FLORA V SCALES
House and Plum Trees c1968
Oils on canvas
262 x 340mm

68
IAN SCOTT
Small Lattice No 19 1978
Acrylic on canvas
812 x 812mm

69
SHIGENAGA
Untitled 1725
Woodcut on rice paper
425 x 270mm



70
MICHAEL DUNCAN SMITHER
Untitled c1962
Oil on hardboard
280 x 740mm

71
MICHAEL DUNCAN SMITHER
Untitled (Mt Egmont) 1963
Watercolour on paper
190 x 230mm

72
MICHAEL DUNCAN SMITHER
Untitled 1964
Gouache on paper
550 x 887mm

73
MICHAEL DUNCAN SMITHER
Typewriter c1971
Typewriter cast in resin
135 x 380 x 360mm

74
MICHAEL DUNCAN SMITHER
Untitled 1972
Oil on board
150 x 775mm

75
MICHAEL DUNCAN SMITHER
Untitled 1973
Watercolour on paper
765 x 640mm

76
MICHAEL DUNCAN SMITHER
Untitled 1974
Oil on hardboard
1220 x 1220mm

77
MICHAEL DUNCAN SMITHER
Untitled (Mt Egmont) c1974
Oil on hardboard
155 x 305mm

78
MICHAEL DUNCAN SMITHER
Untitled 1975
Oil on board
530 x 390mm

79
MICHAEL DUNCAN SMITHER
The Gateway 1977
Oil on hardboard
1215 x 1565mm

80
PHILIP TRUSTUM
0050-T 1976
Oil on torn and unstretched canvas
634 x 250/258mm

81
DR W S WALLIS
Still Life in Blue Bulb 1930
Tempera on board
350 x 300mm

82
DR W S WALLIS
Huts
Tempera on board
345 x 390mm

83
DR W S WALLIS
Untitled
Oil and tempera on board
370 x 490mm

84
DR W S WALLIS
Houses in Moonlight
Tempera on board
370 x 300mm

85
DR W S WALLIS
Landscape with Figures
Tempera on board
360 x 400mm

86
KENNETH WATKINS
Waiktakari Ranges by Moonlight 1886
Oil on canvas
610 x 425mm

87
JOHN WEEKS
Old Cottage Christchurch c1922
Oil on embossed paper
144 x 238mm

88
JOHN WEEKS
Untitled
Oil on canvas
230 x 320mm

89
JOHN WEEKS
King Country Mountains
Watercolour on paper
505 x 620mm

90
JOHN WEEKS
Music
Tempera on board
340 x 440mm

91
JOHN WEEKS
Still Life
Oil on board
385 x 345mm

92
N WELCH
Hay Stacks
Oil
275 x 385mm

93
MOUNTFORD TOSSWILL WOOLLASTON
Mapua after Rain 1937
Oil on paper
364 x 543mm

94
MOUNTFORD TOSSWILL WOOLLASTON
My House Landscape c1945
Watercolour on paper
215 x 280mm

95
MOUNTFORD TOSSWILL WOOLLASTON
Seated Woman with Landscape 1954-55
Oil on composition cardboard
902 x 573mm

96
MOUNTFORD TOSSWILL WOOLLASTON
Sunset over the Grey River 1957
Oil on paper
450 x 472mm

97
MOUNTFORD TOSSWILL WOOLLASTON
Window in Greymouth 1959
Oil on composition board
795 x 600mm

98
MOUNTFORD TOSSWILL WOOLLASTON
Red Mountains 1959
Watercolour on paper
379 x 555mm

99
MOUNTFORD TOSSWILL WOOLLASTON
Westland Mountains c1959
Watercolour on paper
340 x 555mm

100
MOUNTFORD TOSSWILL WOOLLASTON
Clouds & Hills c1960
Watercolour on paper
342 x 506mm

101
MOUNTFORD TOSSWILL WOOLLASTON
Pond, Takaka c1960
Watercolour on paper
270 x 360mm

102
MOUNTFORD TOSSWILL WOOLLASTON
Waimea 1961
Oil on composition board
905 x 1205mm

103
MOUNTFORD TOSSWILL WOOLLASTON
Winter Sunshine, South Greymouth Coast c1961
Watercolour on paper
268 x 360mm

104
MOUNTFORD TOSSWILL WOOLLASTON
Over Lyttelton Harbour c1963
Watercolour on paper
310 x 388mm

105
MOUNTFORD TOSSWILL WOOLLASTON
Mt Egmont from Front Door of my Brother's House Huinga
Watercolour on paper
430 x 355mm 1977

106
DR W S WALLIS
Road Scene Rotorua
Oil on board
380 x 410mm

107
DR W S WALLIS
Study of Maoris
Oil on canvas

108
DR W S WALLIS
Side Shows
Oil on board
415 x 320mm

109
DR W S WALLIS
Composition
Oil on canvas
375 x 410mm

110
MAXWELL ARMPFIELD
The Priests House Muchelney Abbey
Tempera on canvas
300 x 375mm

111
BARRY BROWN
Perspective 1965
Oil on linen
650 x 500mm

112
ISSAC DIAZ
Untitled
Oil on canvas
546 x 438mm

113
BRYAN JAMES
White Hart Drinking 1974
Woodcut on paper
210 x 210mm

114
W E YAXLEY
Untitled 1969
Oil on board
580 x 570mm

We thank the following for the loan of their works--

- E P Allen
- T W Boon
- A A Davison
- Monica Brewster Trust
- K Haire
- W R Halliburton
- D & O Hooker
- W King
- Father D K King
- R F Mainland
- J Matthews
- D & C Medway
- A Nicoll
- R N O'Reilly
- M Palmer
- W M Spedding
- C Strang
- B Sulzberger
- Taranaki Museum
- Dr R N Wallis
- K & N Adams
- S Hales

Dorset Printing Service